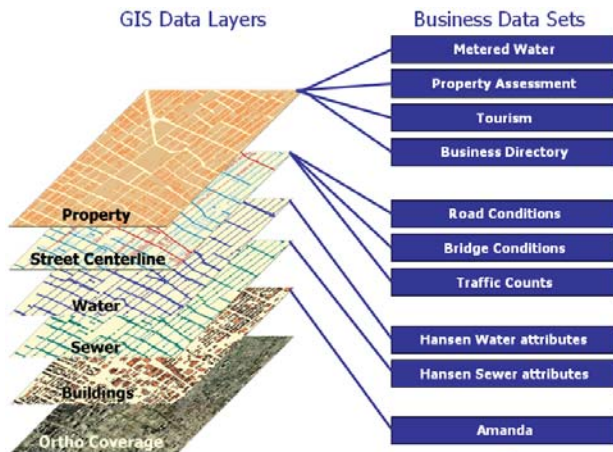


GIS DATA ...

Data Dictionary – There are over 400 layers of spatial data available on the corporate network. You can view the complete list at:

http://gisnet/qishome/DataDictionary/DD_search.asp

All PC's are also configured to have access to the "G" drive, which contains all of this spatial data.



Intellectual Property (IP) Rights – All users of GIS data (and any corporate data for that matter) MUST respect the IP rights of the data owner. A variety of data available to staff are NOT owned by the City, but rather, are licensed from third parties. This data CANNOT be distributed to others by the City without proper authorization.

Privacy – All users of GIS data (corporate and GIS data) MUST respect Municipal Freedom of Information and Protection of Privacy Act (MFIPPA) regulations.

Distribution and Licensing – All City of Hamilton GIS data can only be distributed to third parties under certain conditions. Data licensing is required to support the IP rights of the City, and to limit litigation potentials. GIS Services provides distribution and licensing services, and has the tools to provide data to best suit the needs of the requestor.

GIS CUSTOM APPLICATIONS ...

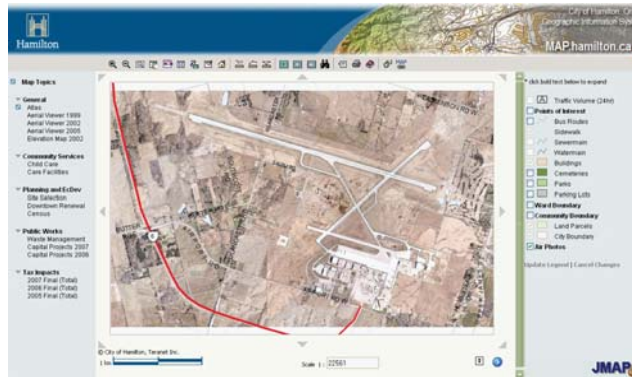
Custom GIS Applications at the City can be broken down into three categories, desktop, web, and mobile. Desktop and mobile applications typically require licensed software and user training. Web applications require no additional software and little user training.

Desktop Examples:

XProp – Property Information Extractor
Custom Search Tools (search by Address, Street Name, Ward, Intersection, Special Interest Locations, etc.)
Ambulance AVL Reporting

Web Examples:

GISNet – Internal Web-GIS Mapping Site
<http://gisnet>
MAP.Hamilton – Public Web-GIS Mapping Site
<http://www.map.hamilton.ca>



PRISM – Public Works Drawing Management System
http://gisnet/prism_app/interactivemaps.asp
West Nile Virus Monitoring (restricted use)
Economic Development Site Selection
<http://www.map.hamilton.ca/EcDevPropertysearch2>
MyHamilton Community Portal MapIT
<http://map.hamilton.ca>

Mobile Examples:

West Nile Virus Standing Water Data Collection
Fire Mobile Emergency Support Vehicle
Traffic Streetlight maintenance



GIS Services

Quick Reference Guide
for City of Hamilton Staff

(November 2007)



Discover the City of Hamilton's GIS Services!

This guide provides an overview of Geographic Information Systems (GIS) tools, data, applications, and services provided through the **GIS Services Section** in the Information Technology Services Division of the Corporate Services Department. Discover the following major components through this guide:

GIS Services Team – Meet the GIS Services Team and put a face to the name. Discover who to call with respect to particular questions.

GIS Tools – Discover the tools that are available for your use, many of which are FREE!!

GIS Data – The City has a wealth of accessible GIS data and information provided by virtually every department. Discover what there is and explore how it may assist you in your day-to-day activities and projects.

GIS Applications – Discover existing GIS applications that are available for both casual browsers and power users. We GUARANTEE you will find a use!

GIS Services – A variety of services are available including custom mapping, data distribution and licensing, spatial analysis, business process re-engineering, application development, training, and much more!



Contact Us: Questions, comments, and suggestions are always welcome at GISservices@hamilton.ca.

GIS SERVICES TEAM ...



seated in front row (left to right):

David Grzicic (GIS Analyst) – x4208

James Rickert (GIS Coordinator – Applications) – x2173

Erin Bosch (GIS Technologist) – x4083

Paul Casey (GIS Analyst) – x5710

standing in back row (left to right):

Al Little (Manager of GIS Services) – x4287

Rosa Linschoten (GIS Analyst) – x4140

Heather Howe (GIS Coordinator – Landbase) - x4274

Mark Mitchell (GIS Technologist) – x2172

Feel free to contact any member of the GIS Services Team for information. However, for specific information on:

GIS Troubleshooting: ITS Help Desk (x4357)

GIS Data: Heather Howe (hhowe@hamilton.ca)

GIS Applications: James Rickert (jrickert@hamilton.ca)

GIS Manager: Al Little (alittle@hamilton.ca)

ANNUAL WORLDWIDE GIS DAY ...

The City of Hamilton, hosts GIS Day events annually. Mark your calendar and join us in mid November!



GIS TOOLS ...

Intergraph Mapping and GeoSpatial Solutions – Intergraph Canada has been the City's GIS software vendor of choice since 1989. Currently, the GeoMedia suite of products provides a complete spectrum of solutions for specific business requirements.



GeoMedia WebMap – For many users, accessing GIS information via their web browser (for FREE) is sufficient for their needs. The GISNet internal application and MAP.Hamilton public application are very similar, however, GISNet will contain more detailed information for internal use only (see Applications section).

GeoMedia Viewer – For those users that require more control over their GIS viewing and map creation, the **FREE** GeoMedia Viewer software may be the right solution for you. This software is pre-loaded on all new PC's and is downloadable from GISNet for older desktops. This desktop software provides basic GIS functionality and does not require formal training investments.



GeoMedia – This is a desktop application that is intended for those clients that have the need to build and maintain simple GIS data warehouses and perform more complex spatial queries and analysis.

GeoMedia Professional – Power users will find the professional editing and spatial analysis capabilities of this top-of-the-line software package suitable for the most complex GIS tasks.

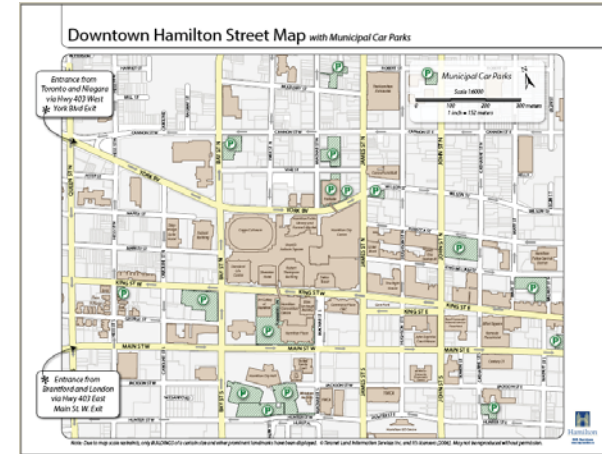
OnDemand - For the mobile or field worker, OnDemand brings GIS information and capabilities to your handheld mobile devices (e.g. iPAQ Pocket PC). Great for field data capture to eliminate data transcription errors.

GeoMedia Grid– This is a desktop application that provides seamless integration of vector and grid data formats for viewing and analysis. It is ideally suited for carrying out complex spatial analysis such as Creating the City of Hamilton DEM (Digital Elevation Model) and Hot Spot Detection (spatial density analysis of point cases).

<http://www.intergraph.com/products/>

GIS SERVICES ...

Custom Mapping – GIS Services can prepare maps for reports, publications, and presentations up to 42 inches in width. Cost recovery on materials applies to hard copy outputs. Digital versions can also be provided.



Data Distribution – Certain Hamilton GIS data is available for use by third parties, including consultants. A data license agreement is required and fees may be applicable depending on the client and proposed use. See Data section of this brochure for limitations.

Spatial Analysis – Spatial analysis of business data can make patterns and anomalies stand out prominently, where tabular spreadsheets and databases fall short. A picture is worth a thousand words!

Business Process Re-Engineering – GIS Services can assist clients integrate GIS functionality into their day-to-day or project activities to increase efficiencies and effectiveness.

Application Development – Automation of routine or complex tasks can provide significant operational benefits. Custom tools can be developed for desktop, web, and mobile platforms. Integration with other business applications leverages capital investments.

Training – Hit the ground running. Regularly scheduled orientation sessions provide an overview of a variety of GIS tools available to staff. For details on these sessions and to sign up online visit

<http://gisnet/GISresources>